



DESIGN TEAM PROFILE

For Hospitality & Commercial
projects

By Goodlux Design Consultancy Co.,Ltd.
15 Pradipat 17 Road. Phayathai, Bangkok
Email: sirisak@goodluxdesign.com
Contact: (+66)095-651-6695
www.goodluxdesign.com

Follow us on social media:



@goodlux



@goodluxdesign



GOODLUX DESIGN is a full-service collaborative architectural, interior design, and lighting consultancy firm with head office in Bangkok, Thailand. Established in 2012, the firm has developed more than 100 awe-inspiring projects across Asia, ranging from residential to commercial.

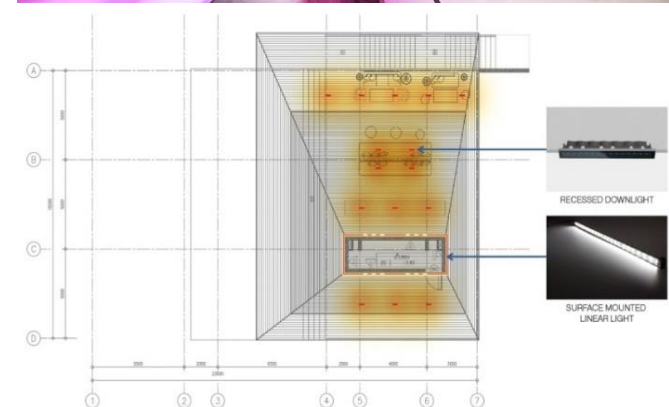
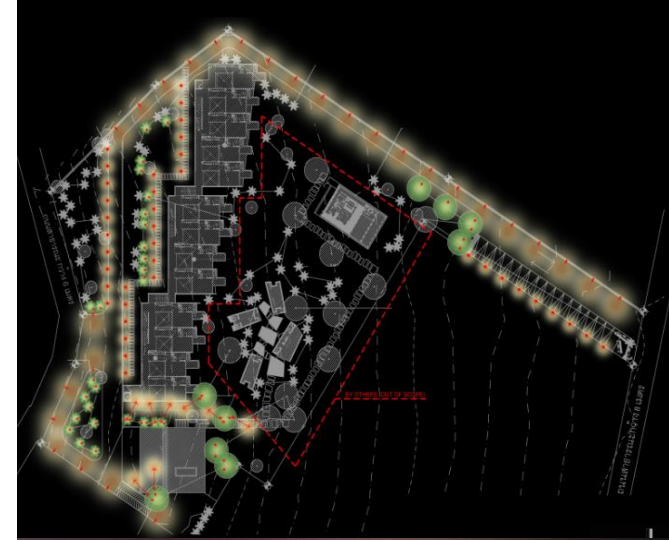


The creative process at GOODLUX DESIGN begins hand-in-hand with the client by conceptualizing a logical series of design solutions that work together naturally. The resulting work encourages the viewer to discover a surprising series of spaces that are not only aesthetically inimitable, but also creates an emotional connection.

GOODLUX DESIGN gives power and strength to dress the space that has been created with a characteristic of design approach. With a “know-how” and “know-who” We have fostered relationships with the most sought-after Designers to redefine the experience of space with a philosophical approach to design – rooted in inspiration – and honouring the context of a project’s location.

ON-GOING PROJECTS:

1. **The Gems Luxury Pool Villa, Samui** – Interior & Lighting design, completed concept design. Contract will end by December 2019. Project value is 220,000,000 baht.
2. **The Pin Luxury Pool Villa, Krabi** – Interior & Lighting design, completed drawing for construction and under construction process. Contract will end by March 2020. Project value is 60,000,000 baht.
3. **Phranakorn Heritage Hotel, Bangkok** – Interior & Lighting design, completed design development process. Contract will end April 2020. Project value is 80,000,000 baht.
4. **Ratthanathibet Mixed-use Development** – Courtyard & Fairfield hotel Lighting concept design. Contract will end by August 2020. (NDA signed)
5. **Aonang Patek Resort, Krabi** – Lighting design tendering process. Contract will end by November 2019. Project value is 150,000,000 baht.
6. **Avani+ Crown Lanta Resort, Krabi** – Interior & Lighting design, mock-up room execution and full renovations kick off will be in April 2020. The Project value is 120,000,000 baht. (NDA signed)
7. **Novotel Hyderabad Airport, India** – Lighting concept design stage. Contract is signed September 2019 until March 2020. (NDA signed)





OUR GLOBAL CORPORATE CLIENTS



OUR SUCCESSFUL COLLABORATORS



emo_D



P49 DEESIGN



architect kidd



GROUND ARCHITECTS



loilo



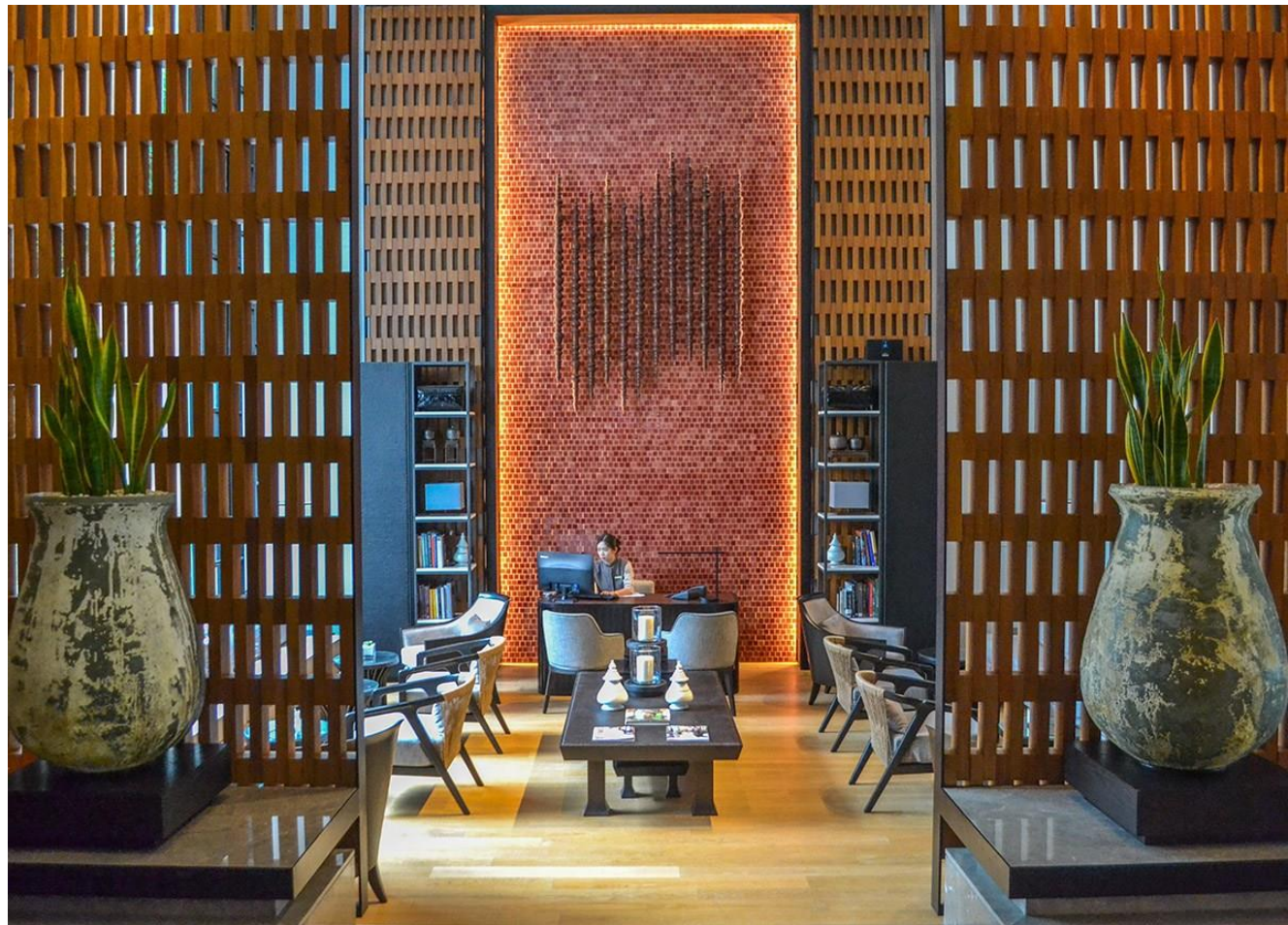
SPA+A Architect



digitalspace

OUR ACHIEVED LOCATIONS





ANANTARA CHIANG MAI

Location: Chiang Mai
 Area: Approx 7,700 sq.m.
 Year: 2014 - 2017
 Status: Completed

In collaboration with SPA+A Architect and PIA Interior Co., Ltd.





ANANTARA CHIANG MAI

Location: Chiang Mai
Area: Approx 7,700 sq.m.
Year: 2014-2017
Status: Completed

In collaboration with SPA+A Architect and PIA Interior Co., Ltd.

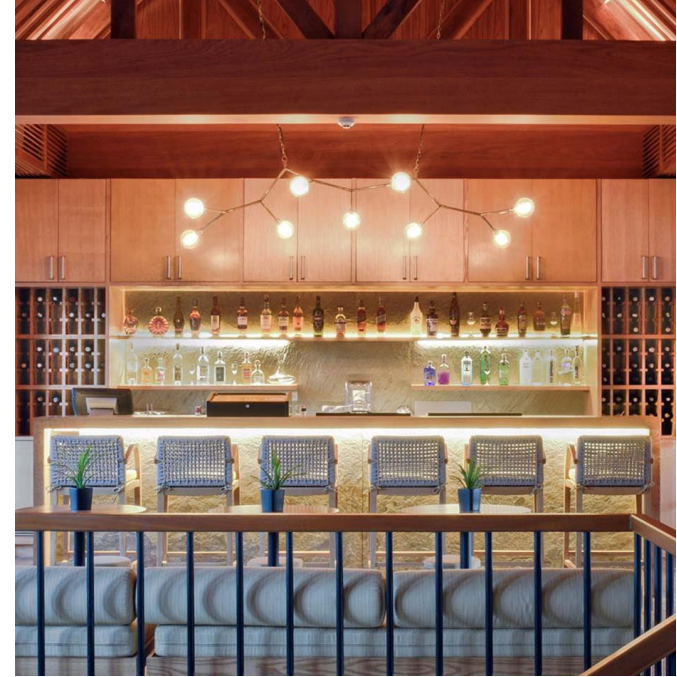




AZERAI LUANGPRABANG HOTEL

Location: Laungprabang, Lao
Area: Approx 7,817 sq.m.
Year: 2015-2017
Status: Completed

Interior & Lighting Design in collaboration with Scale1:1

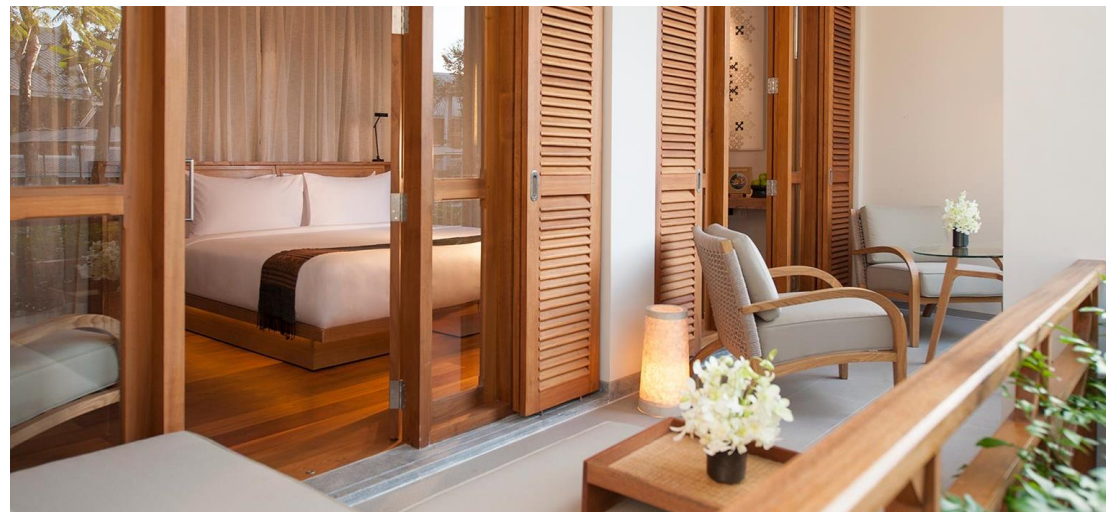


AZERAI LUANGPRABANG HOTEL

Location: Laungprabang, Lao
 Area: Approx 7,817 sq.m.
 Year: 2015-2017
 Status: Completed

Interior & Lighting Design in collaboration with Scale1:1





SERAI LAUNGPRABANG RESORT

Location: Laungprabang, Lao
 Area: Approx 7,817 sq.m.
 Year: 2014 - 2017
 Status: Completed

Interior & Lighting Design in collaboration with Scale1:1



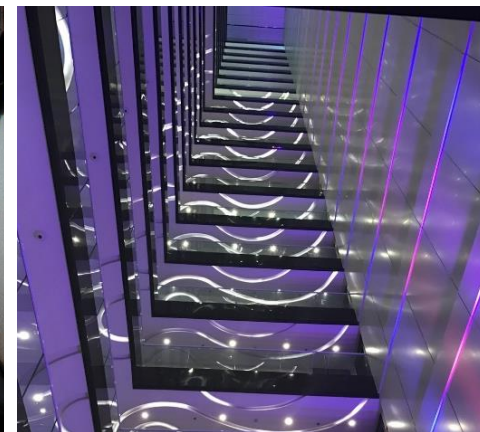


AMARI RESIDENCE PATTAYA

Location: Pattaya
 Area: Approx 4,500 sq.m.
 Year: 2014 - 2017
 Status: Completed

Interior & Lighting Design in collaboration with Model1:1

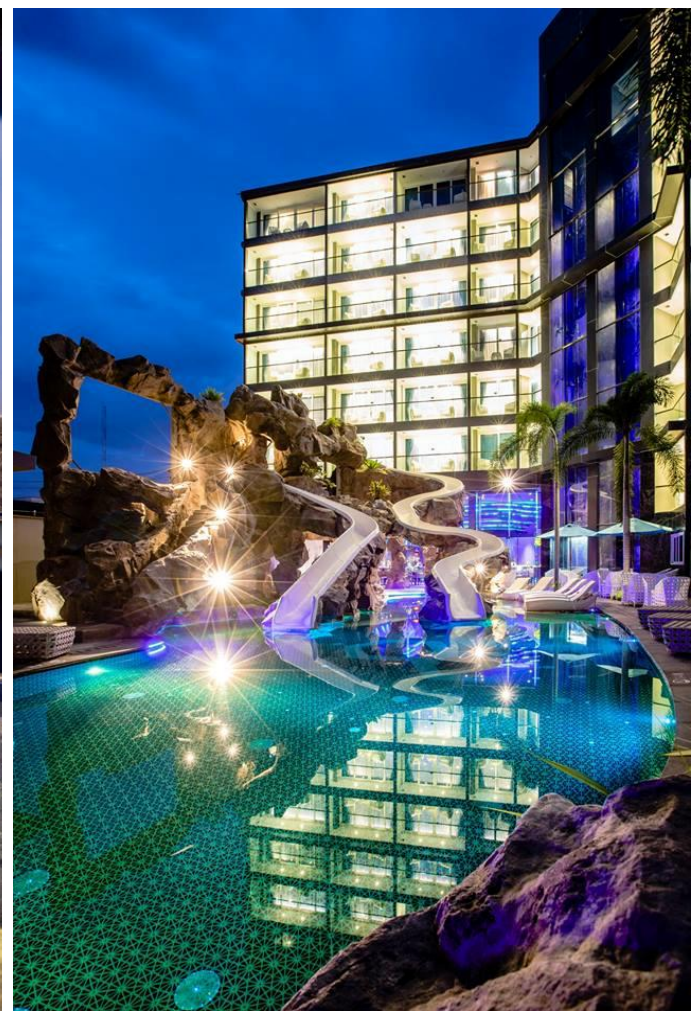




AMARI RESIDENCE PATTAYA

Location: Pattaya
Area: Approx 4,500 sq.m.
Year: 2014 -2017
Status: Completed

Interior & Lighting Design in collaboration with Model1:1



CENTARA AZURE HOTEL

Location: Pattaya
 Area: Approx sq.m.
 Year: 2015 - 2017
 Status: Completed

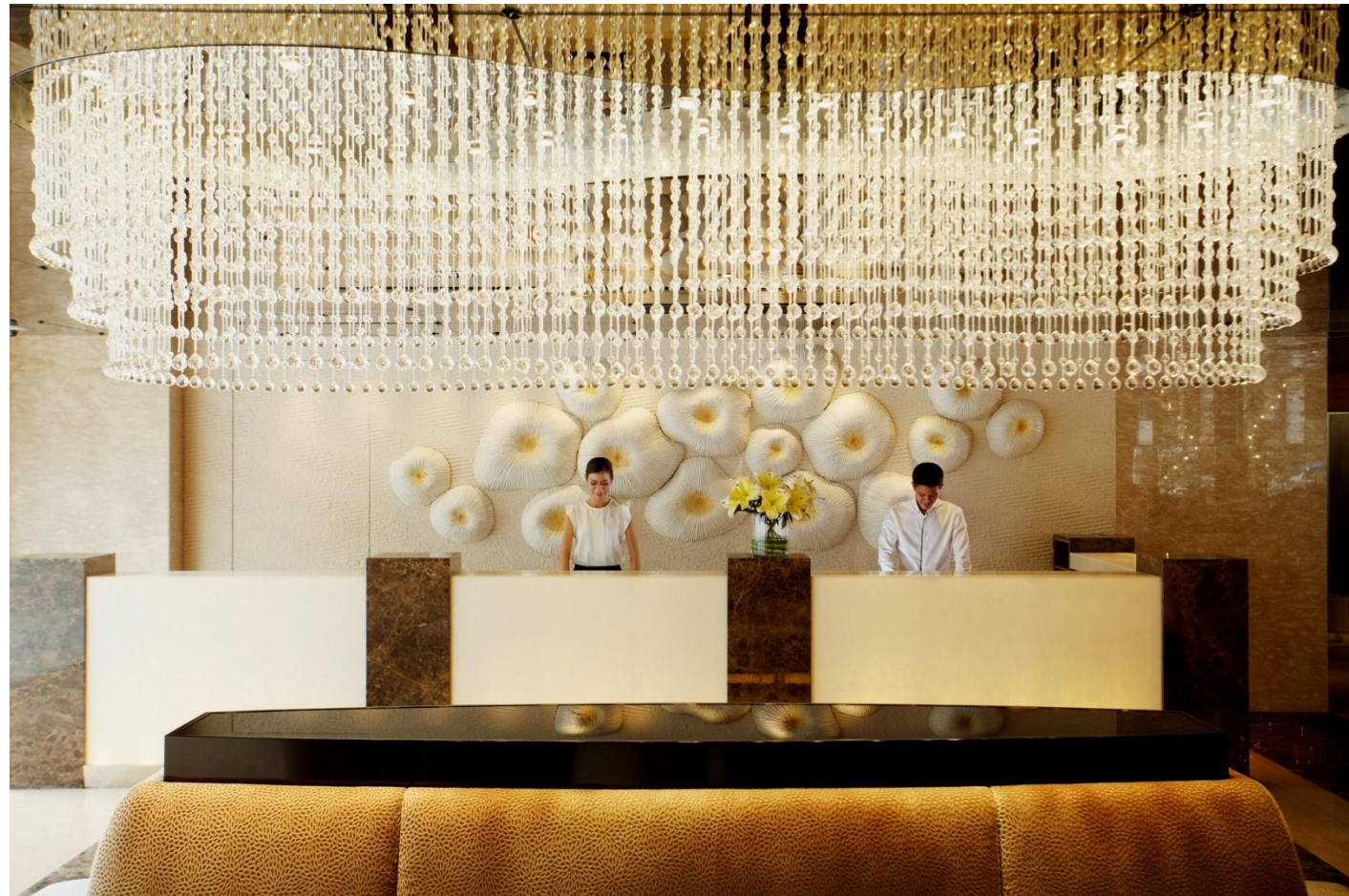
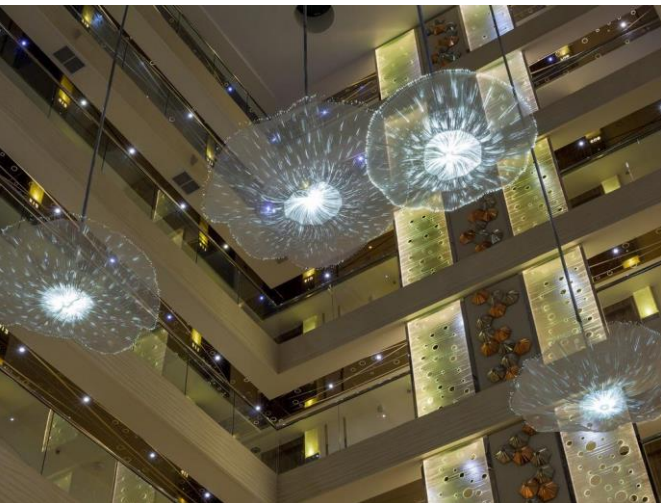
Interior & Lighting Design in collaboration with Model1:1



CENTARA AZURE HOTEL

Location: Pattaya
 Area: Approx sq.m.
 Year: 2015 - 2017
 Status: Completed

Interior & Lighting Design in collaboration with Model1:1



CENTARA GRAND PRATAMNAK

Location: Pattaya
 Area: Approx 14,000 sq.m.
 Year: 2012 - 2014
 Status: Completed

Interior & Lighting Design in collaboration with Model1:1

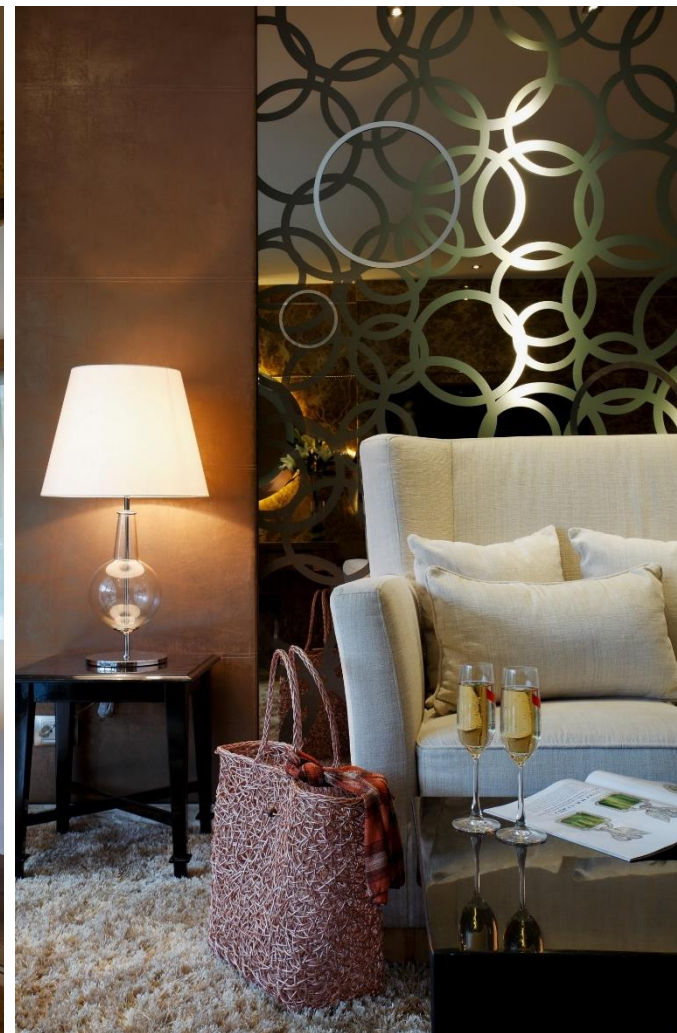




CENTARA AZURE HOTEL

Location: Pattaya
Area: Approx sq.m.
Year: 2015 -2017
Status: Completed

Interior & Lighting Design in collaboration with Model1:1



CENTARA GRAND PRATAMNAK

Location: Pattaya
 Area: Approx 14,000 sq.m.
 Year: 2012 - 2014
 Status: Completed

Interior & Lighting Design in collaboration with Model1:1



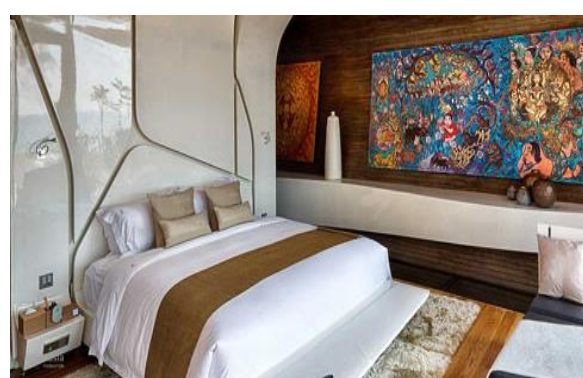


CENTARA GRAND PRATAMNAK

Location: Pattaya
Area: Approx 14,000 sq.m.
Year: 2012 - 2014
Status: Completed

Interior & Lighting Design in collaboration with Model1:1





INIALA BEACH HOUSE

Location: Phuket
 Area: Approx 9,000 sq.m.
 Year: 2014 - 2016
 Status: Completed

In collaboration with Graham Lamp, Crafactor, Campana brothers, Ramon Obed, Jaime Hayon, Joseph Walsh, A-cero



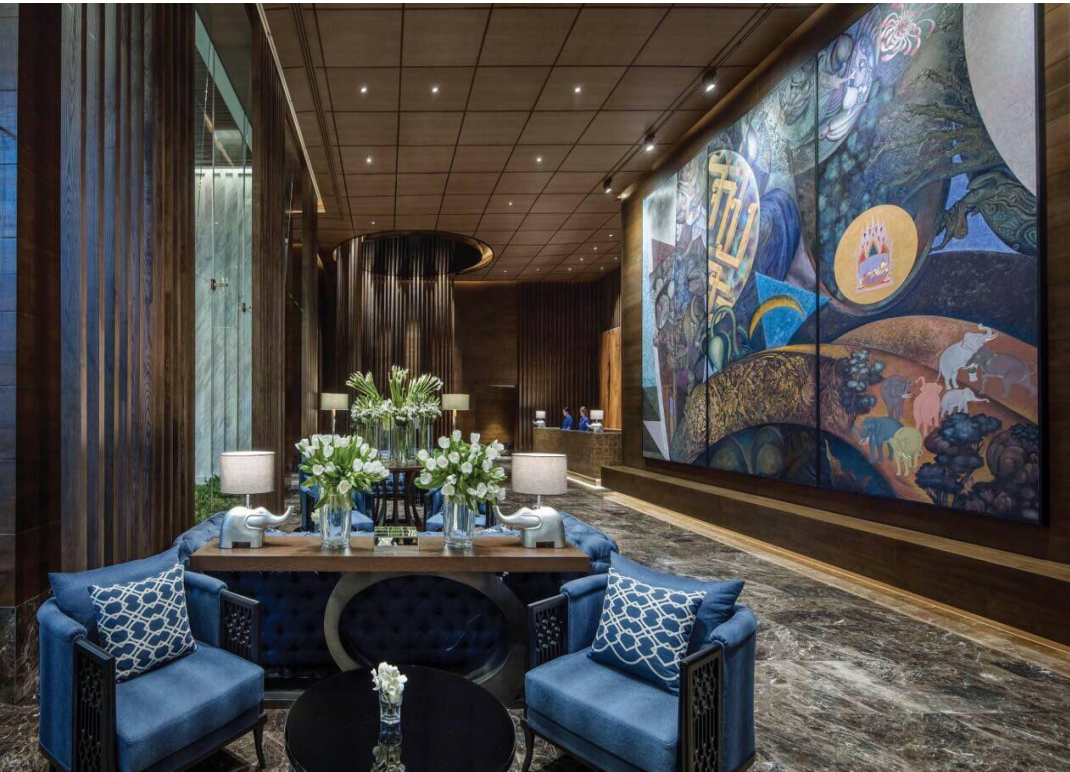
INIALA BEACH HOUSE

Location: Phuket
 Area: Approx 9,000 sq.m.
 Year: 2014 - 2016
 Status: Completed

In collaboration with Graham Lamp, Crafactor, Campana brothers, Ramon Obeda, Jaime Hayon, Joseph Walsh, A-cero



OUR PROJECT REFERENCES



137 PILLARS HOUSE BANGKOK

Location: Bangkok
Area: Approx 90,000 sq.m.
Year: 2014 - 2017
Status: Completed

In collaboration with Palmer & Turner (Thailand) Ltd , P49Design,
Santhaya & Associates and PLandscape.



137 PILLARS HOUSE BANGKOK

Location: Bangkok
 Area: Approx 90,000 sq.m.
 Year: 2014 - 2017
 Status: Completed

In collaboration with Palmer & Turner (Thailand) Ltd , P49Design,
 Santhaya & Associates and PLandscape.

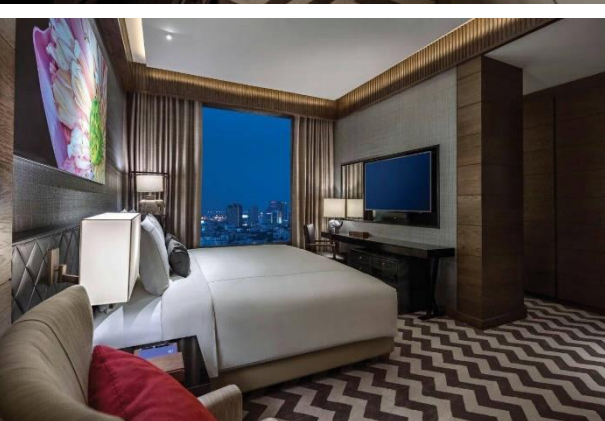


137 PILLARS HOUSE BANGKOK

Location: Bangkok
Area: Approx 90,000 sq.m.
Year: 2014 - 2017
Status: Completed

In collaboration with Palmer & Turner (Thailand) Ltd , P49Design, Santhaya & Associates and PLandscape.





137 PILLARS HOUSE BANGKOK

Location: Bangkok
Area: Approx 90,000 sq.m.
Year: 2014- 2017
Status: Completed

In collaboration with Palmer & Turner (Thailand) Ltd , P49Design, Santhaya & Associates and PLandscape.





HOTEL LABARIS KHAOYAI

Lighting Design in collaboration with Chat Architect and Shma Landscape

Location: Khaoyai
Area: Approx 14,000 sq.m.
Year: 2016 - 2018
Status: Completed





HOTEL LABARIS KHAOYAI

Lighting Design in collaboration with Chat Architect and Shma Landscape

Location: Khaoyai
Area: Approx 14,000 sq.m.
Year: 2016 - 2018
Status: Completed



THE GALLERY RESIDENCE

Location: Pattaya
 Area: Approx 8,000 sq.m.
 Year: 2016-2018
 Status: Completed

Lighting Design in collaboration with MakeAscene



OUR ON-GOING PROJECT REFERENCES

2019-2020





THE GEMS SAMUI POOL VILLA

Location: Koh Samui, Thailand
Area: Approx 11,000 sq.m.
Year: 2019 - 2020
Status: Under demolition and will start renovation by November 2019



THE GEMS SAMUI POOL VILLA

Location: Koh Samui, Thailand
Area: Approx 11,000 sq.m.
Year: 2019 - 2020
Status: Under demolition and will start renovation by November 2019



THE GEMS SAMUI POOL VILLA

Location: Koh Samui, Thailand
Area: Approx 11,000 sq.m.
Year: 2019 - 2020
Status: Under demolition and will start renovation by November 2019



THE GEMS SAMUI POOL VILLA

Location: Koh Samui, Thailand
Area: Approx 11,000 sq.m.
Year: 2019 - 2020
Status: Under demolition and will start renovation by November 2019



THE PIN LUXURY POOL VILLA

Location: Krabi, Thailand
Area: Approx 9,000 sq.m.
Year: 2019 - 2020
Status: Under construction



THE PIN LUXURY POOL VILLA

Location: Krabi, Thailand
Area: Approx 9,000 sq.m.
Year: 2019 - 2020
Status: Under construction



THE PIN LUXURY POOL VILLA

Location: Krabi, Thailand
Area: Approx 9,000 sq.m.
Year: 2019 - 2020
Status: Under construction



THE PIN LUXURY POOL VILLA

Location: Krabi, Thailand
Area: Approx 9,000 sq.m.
Year: 2019 - 2020
Status: Under construction



THE PIN LUXURY POOL VILLA

Location: Krabi, Thailand
Area: Approx 9,000 sq.m.
Year: 2019 - 2020
Status: Under construction



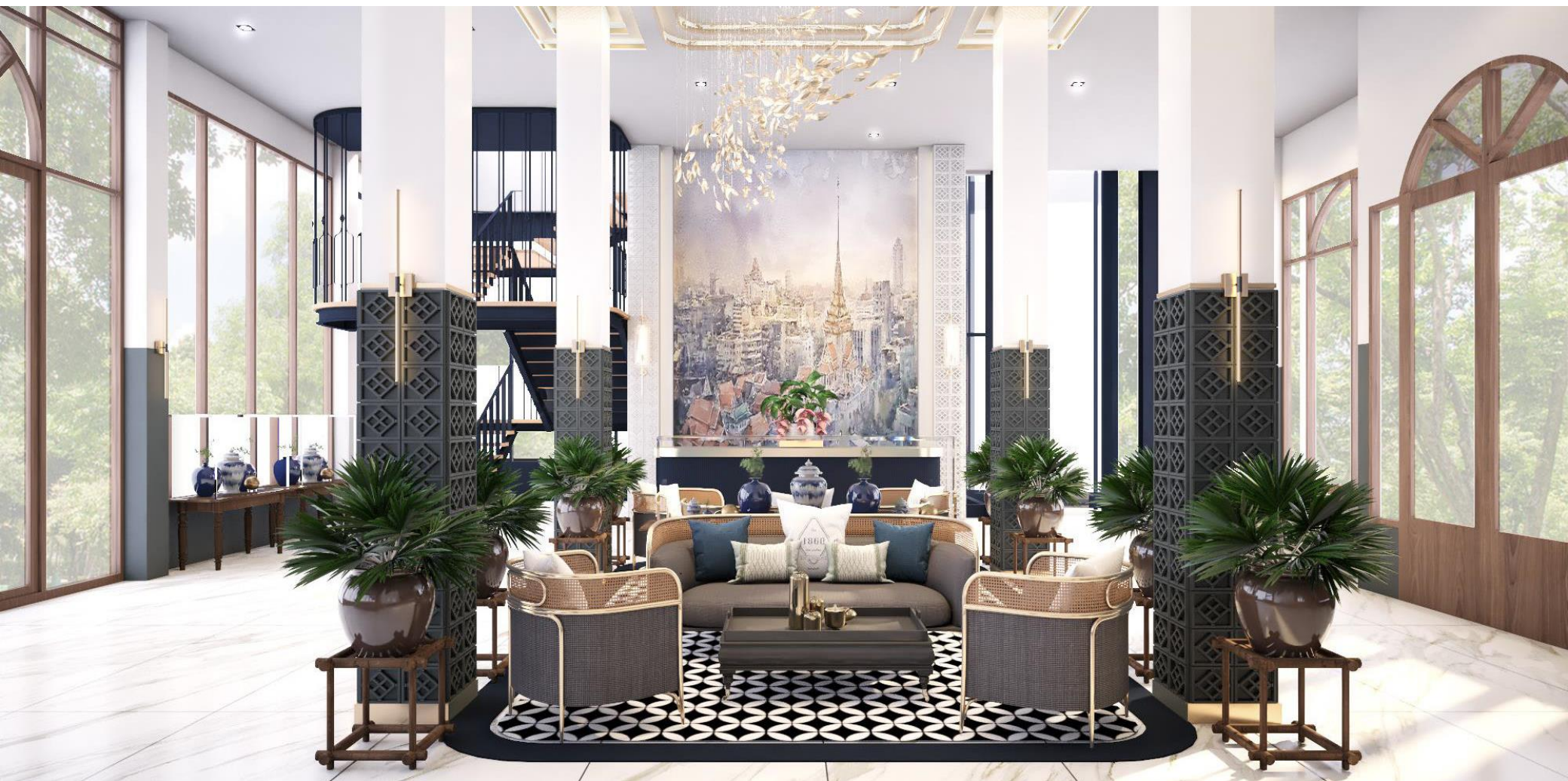
THE PIN LUXURY POOL VILLA

Location: Krabi, Thailand
Area: Approx 9,000 sq.m.
Year: 2019 - 2020
Status: Under construction



PHRANAKORN HERITAGE HOTEL

Location: Bangkok, Thailand
Area: Approx 11,000 sq.m.
Year: 2019 - 2020
Status: Under demolition and will start renovation by November 2019



PHRANAKORN HERITAGE HOTEL

Location: Bangkok, Thailand
Area: Approx 11,000 sq.m.
Year: 2019 - 2020
Status: Under demolition and will start renovation by November 2019



PHRANAKORN HERITAGE HOTEL

Location: Bangkok, Thailand
Area: Approx 11,000 sq.m.
Year: 2019 - 2020
Status: Under demolition and will start renovation by November 2019



PHRANAKORN HERITAGE HOTEL

Location: Bangkok, Thailand
Area: Approx 11,000 sq.m.
Year: 2019 - 2020
Status: Under demolition and will start renovation by November 2019



PHRANAKORN HERITAGE HOTEL

Location: Bangkok, Thailand
Area: Approx 11,000 sq.m.
Year: 2019 - 2020
Status: Under demolition and will start renovation by November 2019



PHRANAKORN HERITAGE HOTEL

Location: Bangkok, Thailand
Area: Approx 11,000 sq.m.
Year: 2019 - 2020
Status: Under demolition and will start renovation by November 2019



PHRANAKORN HERITAGE HOTEL

Location: Bangkok, Thailand
Area: Approx 11,000 sq.m.
Year: 2019 - 2020
Status: Under demolition and will start renovation by November 2019



PHRANAKORN HERITAGE HOTEL

Location: Bangkok, Thailand
Area: Approx 11,000 sq.m.
Year: 2019 - 2020
Status: Under demolition and will start renovation by November 2019



PHRANAKORN HERITAGE HOTEL

Location: Bangkok, Thailand
Area: Approx 11,000 sq.m.
Year: 2019 - 2020
Status: Under demolition and will start renovation by November 2019



PHRANAKORN HERITAGE HOTEL

Location: Bangkok, Thailand
Area: Approx 11,000 sq.m.
Year: 2019 - 2020
Status: Under demolition and will start renovation by November 2019



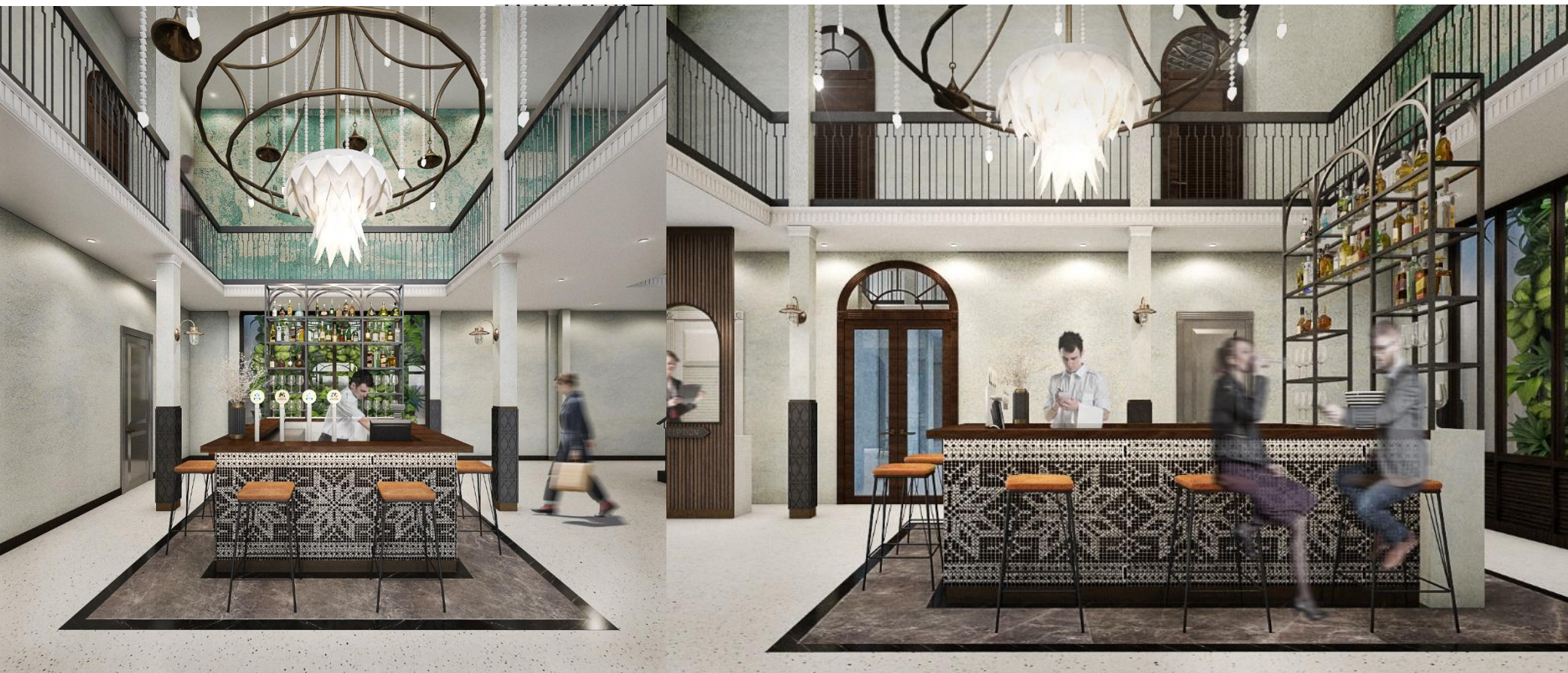
PHRANAKORN HERITAGE HOTEL

Location: Bangkok, Thailand
Area: Approx 11,000 sq.m.
Year: 2019 - 2020
Status: Under demolition and will start renovation by November 2019



SONG WAT HOTEL

Location: Bangkok, Thailand
Area: Approx 5,000 sq.m.
Year: 2020
Status: Under demolition and will start renovation by January 2022



SONG WAT HOTEL

Location: Bangkok, Thailand
 Area: Approx 5,000 sq.m.
 Year: 2020
 Status: Under demolition and will start renovation by January 2022



SONG WAT HOTEL

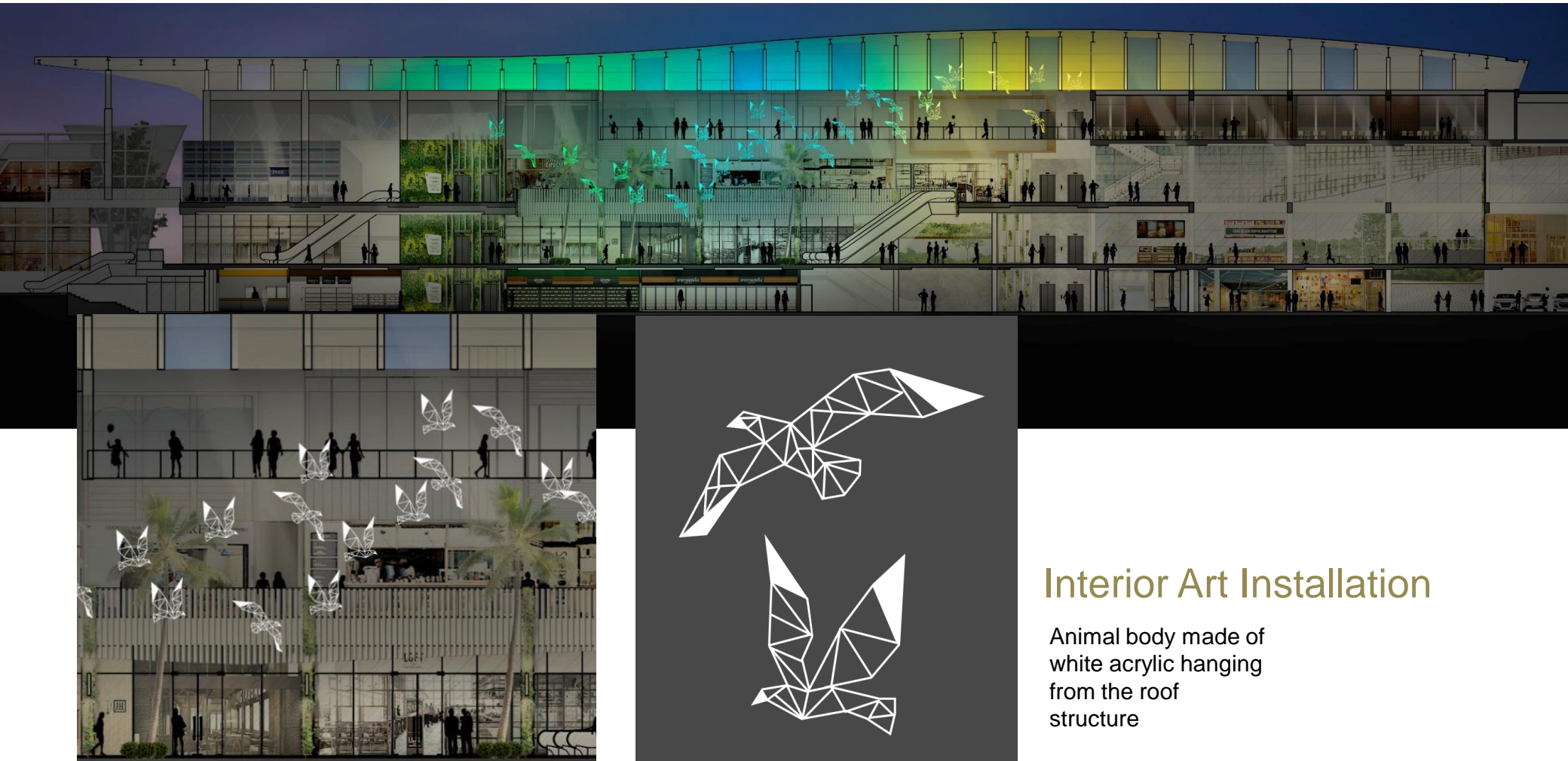
Location: Bangkok, Thailand
Area: Approx 5,000 sq.m.
Year: 2020
Status: Under demolition and will start renovation by January 2022



SONG WAT HOTEL

Location: Bangkok, Thailand
Area: Approx 5,000 sq.m.
Year: 2020
Status: Under demolition and will start renovation by January 2022

OUR INSTALLATION DESIGN REFERENCES

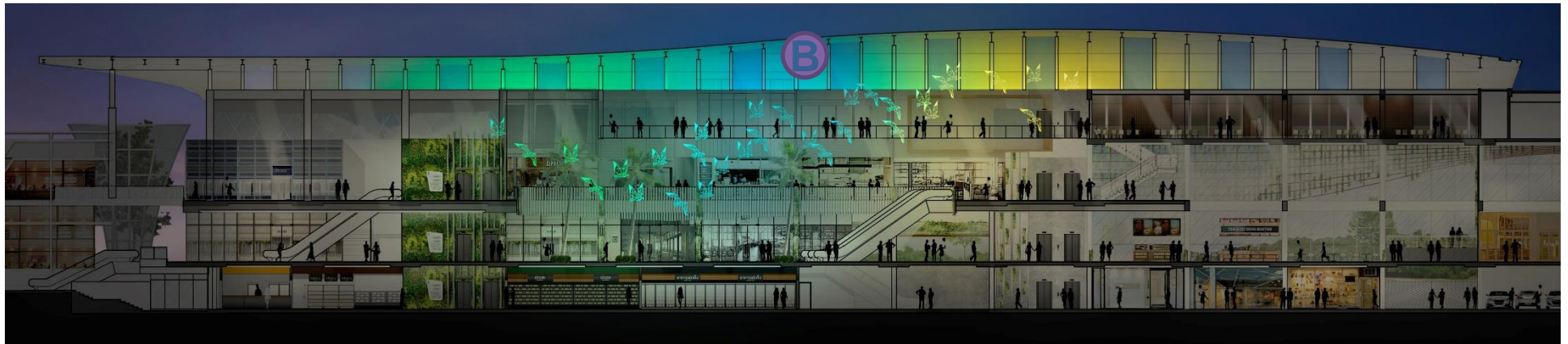
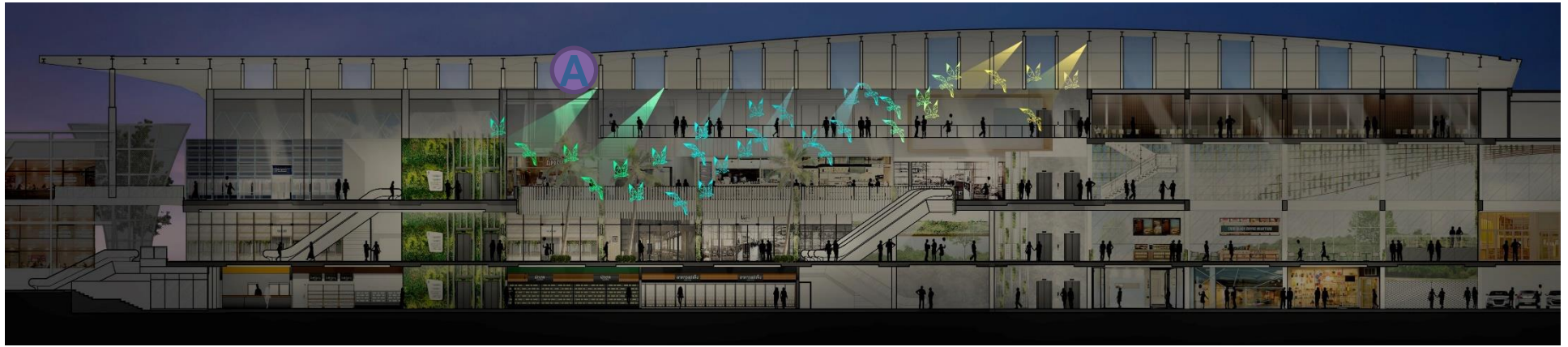


ATT U PARK

Location: Bangkok
Area: Approx 8,000 sq.m.
Year: 2018-2018
Status: Under - construction

Interior Art Installation

Animal body made of
white acrylic hanging
from the roof
structure



A



Surface-mounted
RGB LED
spotlight, wide
beam

B



Surface-mounted
RGB LED linear
light



Exterior Art Installation
Community Mall

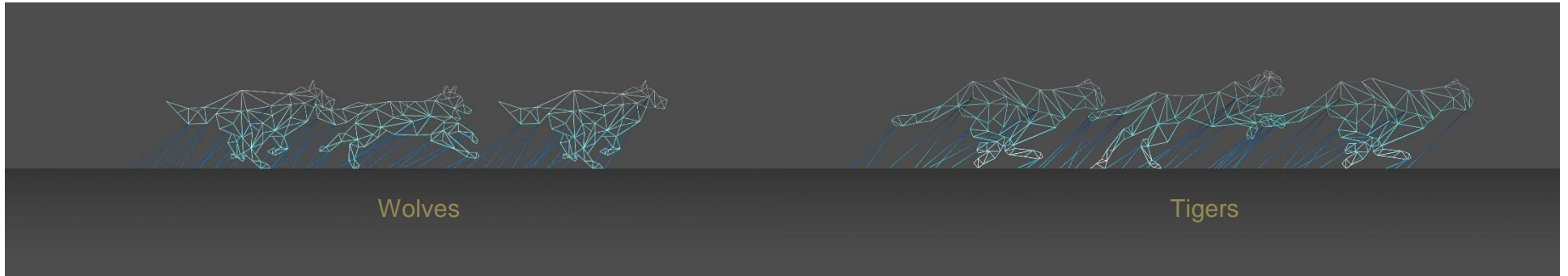


Smaller animals



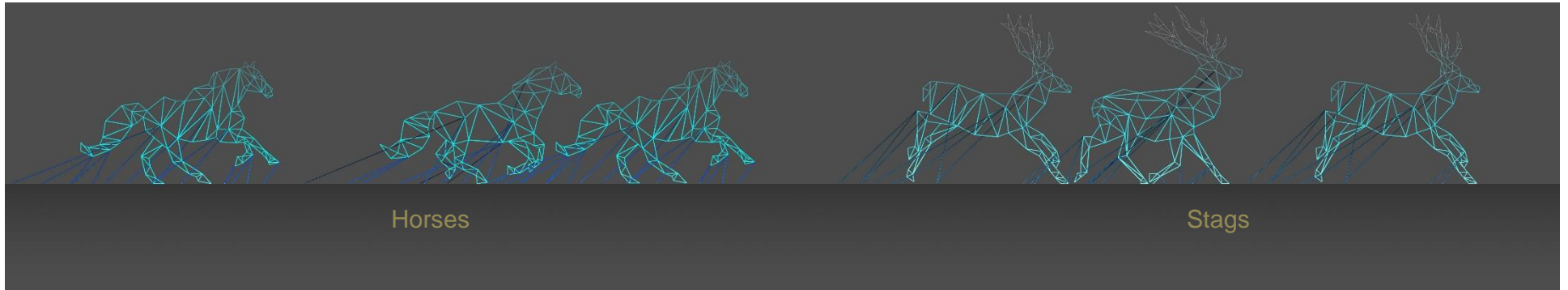
Larger animals

Driving direction



Wolves

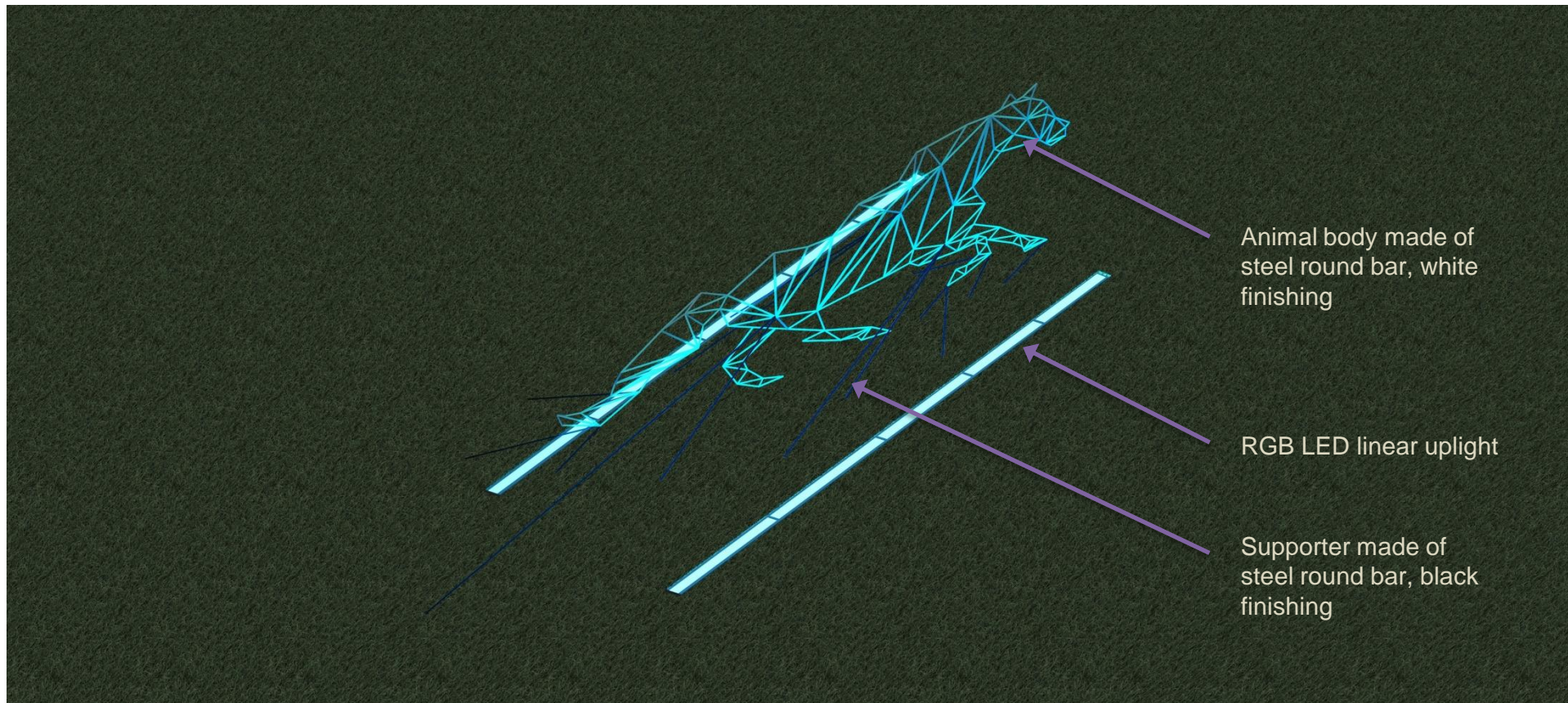
Tigers



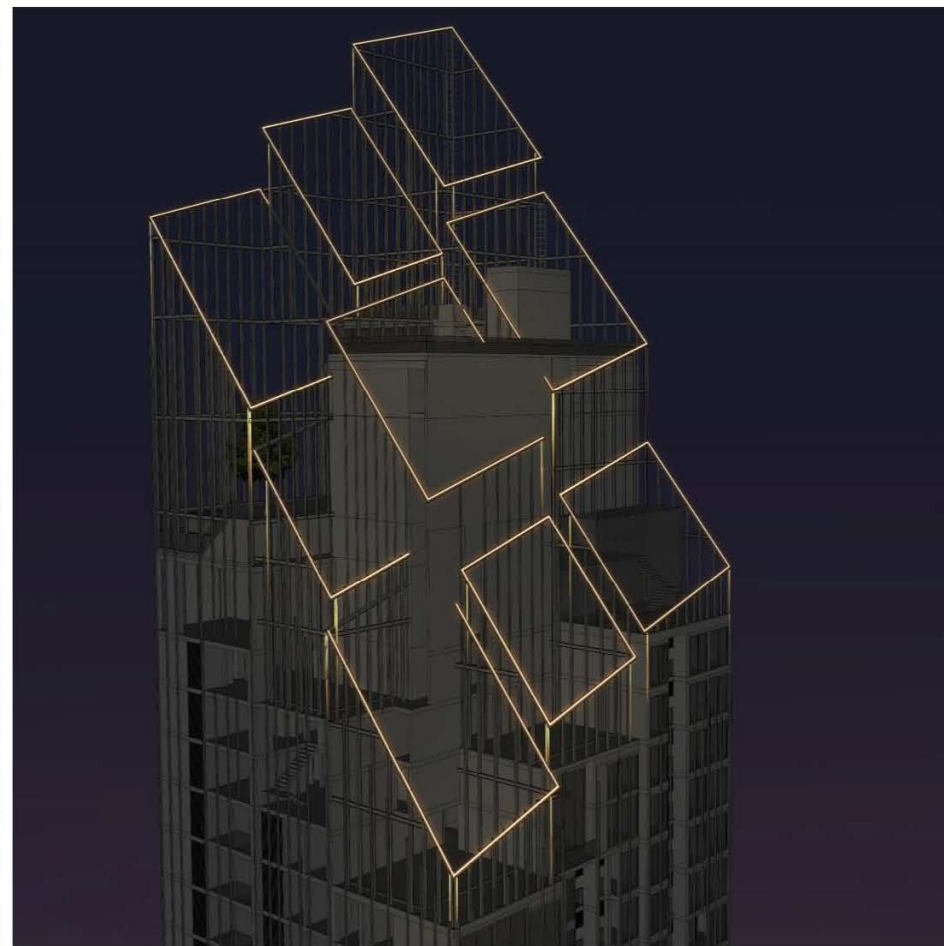
Horses

Stags

Running Animals Sculptures



OUR LIGHTING DESIGN PROCESS REFERENCES



HYDE SUKHUMVIT 11

Location: Bangkok, Thailand
Area: Approx 30,000 sq.m.
Year: 2016 - 2018
Status: Completed



SCALE 1 : 1 Model Facade Lighting Mock Up

HYDE SUKHUMVIT 11

Location: Bangkok, Thailand
Area: Approx 30,000 sq.m.
Year: 2016 - 2018
Status: Completed

OUR COMPUTERIZED IMAGE REFERENCES



WATERFRONT HOTEL



NAIROBI MIXED USE TOWER



RAMADA HOTEL PATTAYA







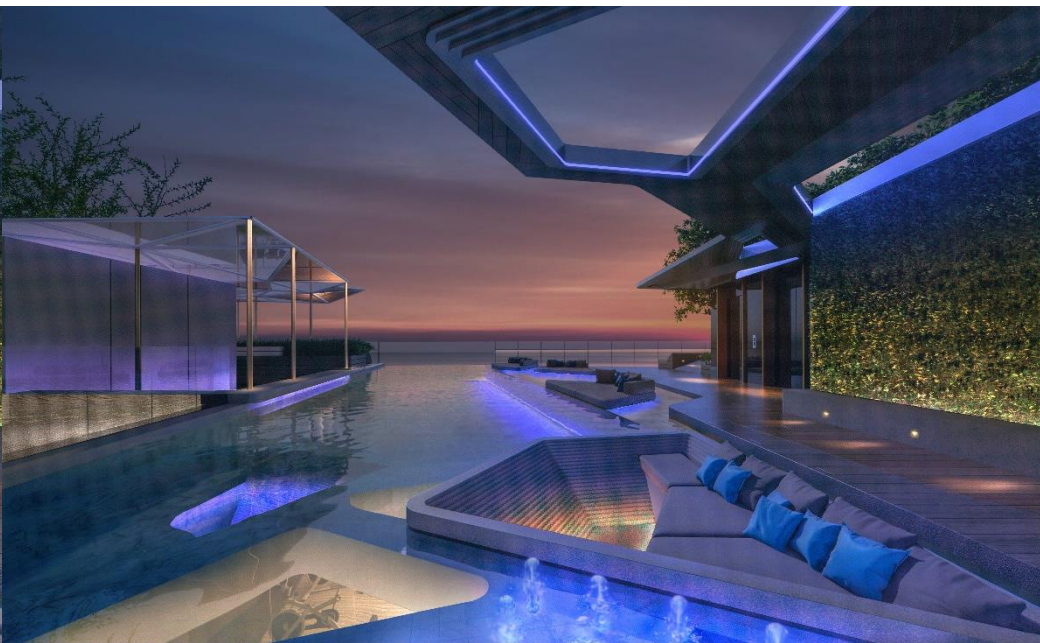
WYNDHAM
Atlas Wongamat
Pattaya



WYDHAM HOTEL PATTAYA

Goodlux Design Consultancy Co.,Ltd.





WYDHAM HOTEL PATTAYA





NAIROBI MIXED USE PROJECT

Goodlux Design Consultancy Co.,Ltd.

NAIROBI LUXURY HOTEL



THANK YOU

By Goodlux Design Consultancy Co.,Ltd.
15 Pradipat 17 Road. Phayathai, Bangkok
Email: sirisak@goodluxdesign.com
Contact: (+66)095-651-6695
www.goodluxdesign.com

Follow us on social media:

 @goodlux

 @goodluxdesign